

First Nations COVID-19 testing in Ontario: Weekly report 86

Coronavirus Disease (COVID-19) Testing in Registered First Nations People in Ontario**

WEEKLY UPDATE

Tuesday, December 7, 2021 (covering tests completed November 29, 2021 to December 5, 2021; vaccinations between November 23, 2021 to November 29, 2021)

N=735				
Number and % of people in the group who were newly tested for COVID-19				
298 (0.61%)		437 (0.42%)		
in a First Nations community***		outside of a First Nations community		
N=231				
Number and % of people in the group newly tested who were positive for COVID-19				
126 (0.46%)		105 (0.21%)		
in a First Nations community***		outside of a First Nations community		
N=965				
Number and % of people in the group newly fully vaccinated for COVID-19 (2 doses, 12 yrs +)				
373 (0.81%)		592 (0.59%)		
in a First Nations community***		outside of a First Nations community		
NUMBERS TO DATE (covering tests completed January 15, 2020 to December 5, 2021; vaccinations between December 15, 2020 to November 29, 2021)				
N=77,135				
Number and % of people in the group who were tested TO DATE for COVID-19				
27,252 (56.0%)		49,883 (48.3%)		
in a First Nations community***		outside of a First Nations community		
N=6,294				
Number and % of people tested in the group TO DATE who were positive for COVID-19				
2,264 (8.3%)		4,030 (8.1%)		
in a First Nations community***		outside of a First Nations community		
N=100770				
Number and % of people in the group who were fully vaccinated for COVID-19 (2 doses, 12 yrs +) TO DATE				
31,941 (69.0%)		68,829 (68.8%)		
in a First Nations community***		outside of a First Nations community		
Key geographic areas (See appendix)	Tested	Positive cases	Fully vaccinated	FN population
North West	22,002 (57.1%)	1,373 (6.2%)	25,896 (70.7%)	38,549
North East	17,997 (51.7%)	1,331 (7.4%)	23,880 (71.3%)	34,792
Southwest	19,729 (48.2%)	2,350 (11.9%)	26,254 (66.4%)	40,959
Southeast	9,616 (44.2%)	651 (6.8%)	14,065 (66.3%)	21,756
Central	7,634 (50.5%)	572 (7.5%)	10,589 (71.6%)	15,127
* suppressed for privacy. ** 151,843 Registered First Nations people in Ontario with a health card; *** based on the residence on the Health Card files.				

Data source: Characteristics of COVID-19 diagnostic test recipients among the Ontario First Nations population, ICES. As of July 18, 2020, the data sources for test volumes and results expanded beyond the original Ontario Laboratory Information System to include data from the Public Health Information System (IPHIS), Distributed Labs (DL), and Public Health Ontario Laboratory (PHOL) databases. COVID-19 vaccination data from COVAXON via ICES (as described above). Ontario hospitalization and death rates from the [Ontario COVID-19 Data Tool](#).

Key messages

Vaccination

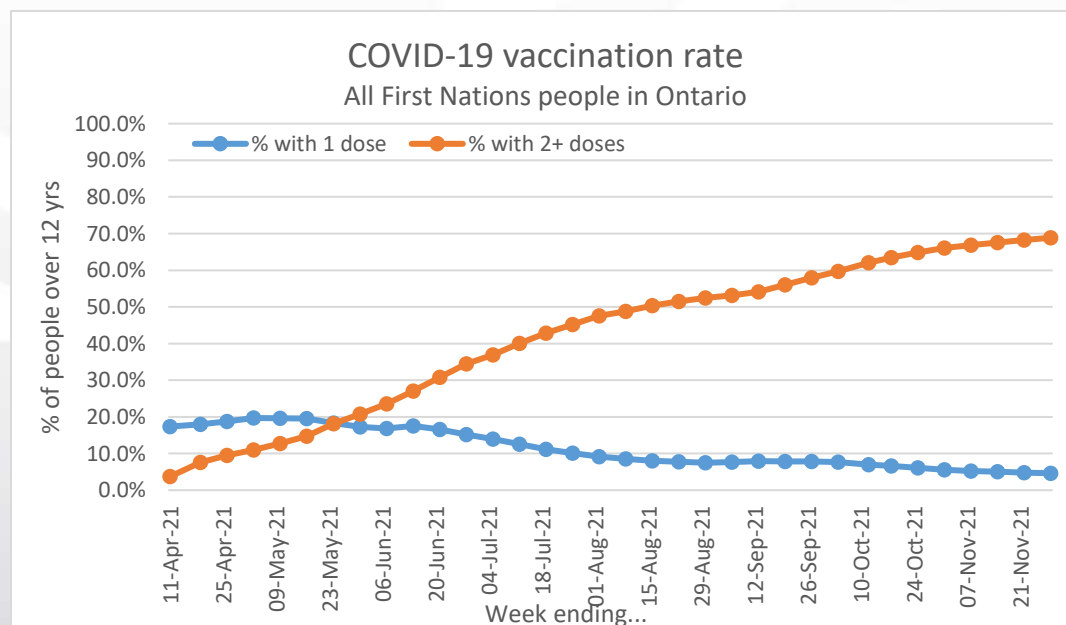
- The proportion of First Nations people 12 years or older who have received 2 or more doses of COVID-19 vaccine as of Nov 29, 2021 is 69%, up only 1% from last week. This rate has gone up by less than 1% each week for the last 6 weeks. At the same time, the proportion receiving their first dose is decreasing.
- There has been virtually no change in the pattern of vaccinations across age groups, regions or among those living within or outside of communities.

Testing

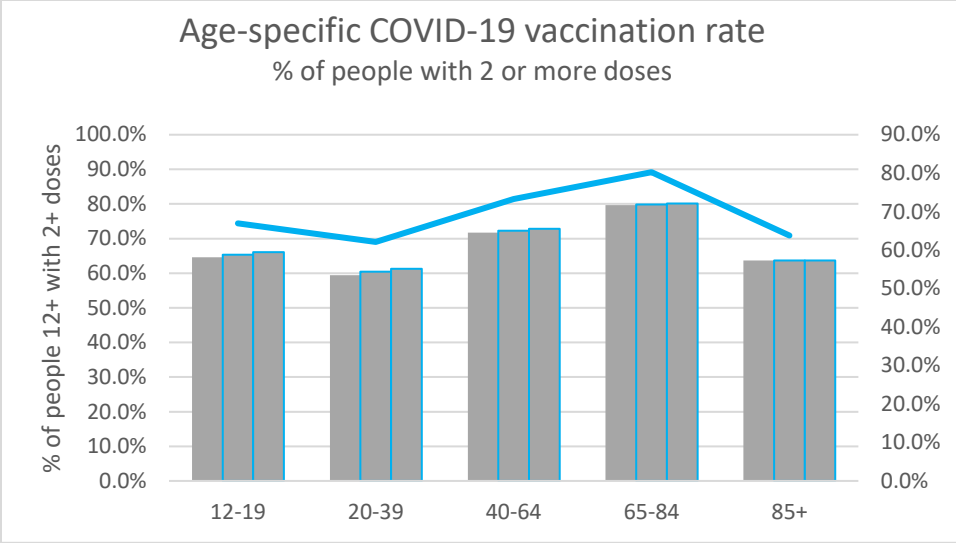
- As of Dec 5, 2021, there were 231 new positives. This is **40% more than** the previous week's total of 166 and is the highest weekly total since Mar 2021. The number of positive results among First Nations to date is 6,294, which is 13% more than 5 weeks ago. Ontario numbers in the same time period went up about 4%.
- **Northeast** and **Southeast**, had the largest increases (9% and 5% more than previous week, respectively). Northeast accounts for **almost half** of the new positives this week.
- Hospital admission rates **did NOT increase** in First Nations nor across Ontario. They may even have decreased somewhat although this may be normal variation. Death rates remained steady.
- Test volumes are increasing in First Nations and across Ontario (data not shown).

Vaccination rates

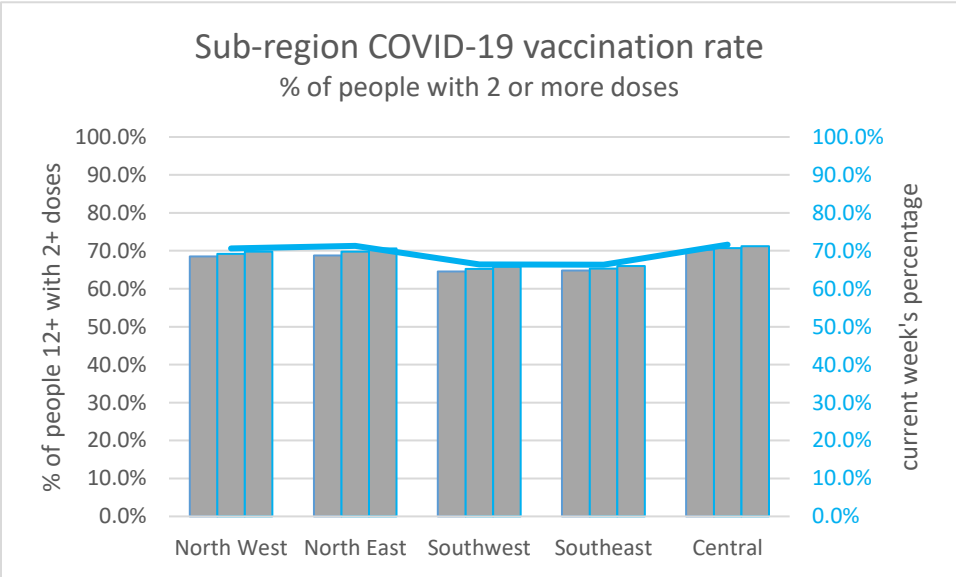
COVID-19 vaccination rates are based on data in the Indian Registry System (IRS) and the Ontario provincial vaccine information system COVAXON. They include all First Nations people who are registered in the IRS and live in Ontario, regardless of whether they live within First Nations communities or not. (Exclusions are: people less than 12 years old, people who declined data entry and members of KCA communities and communities who decided against entry into COVAXON).



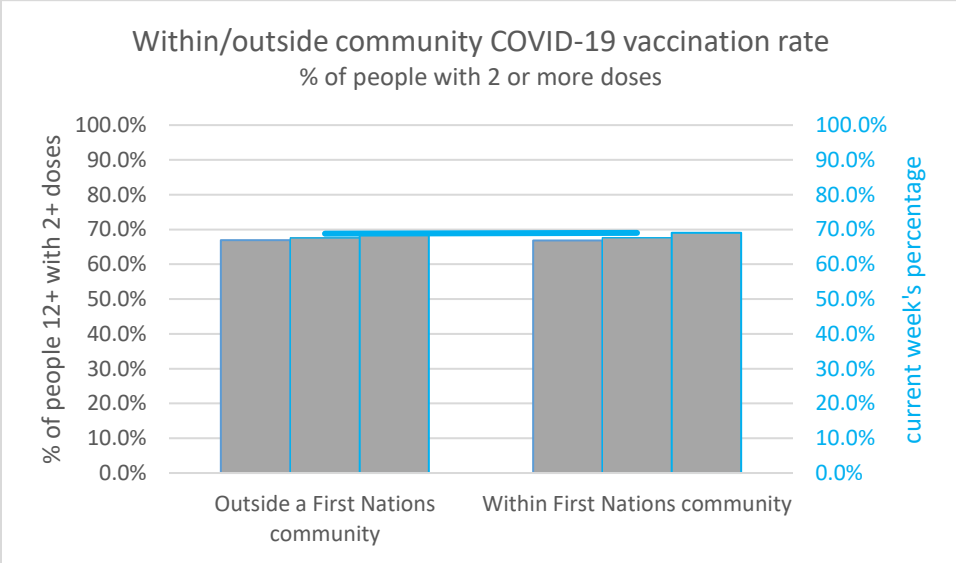
The proportion of people with 2 or more doses is increasing only slightly, up to 69% this week. The proportion with only 1 dose (5%) continues to decrease.



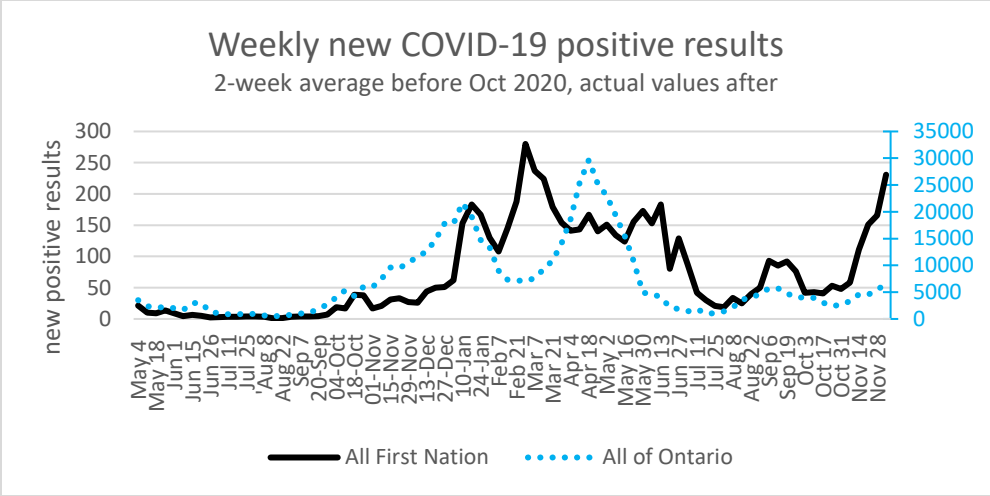
The groups with the highest and lowest percent of people with 2+ doses are 65-84 and 20-39 years, respectively. The blue line shows rate for current period, with previous weeks' data in grey bars.



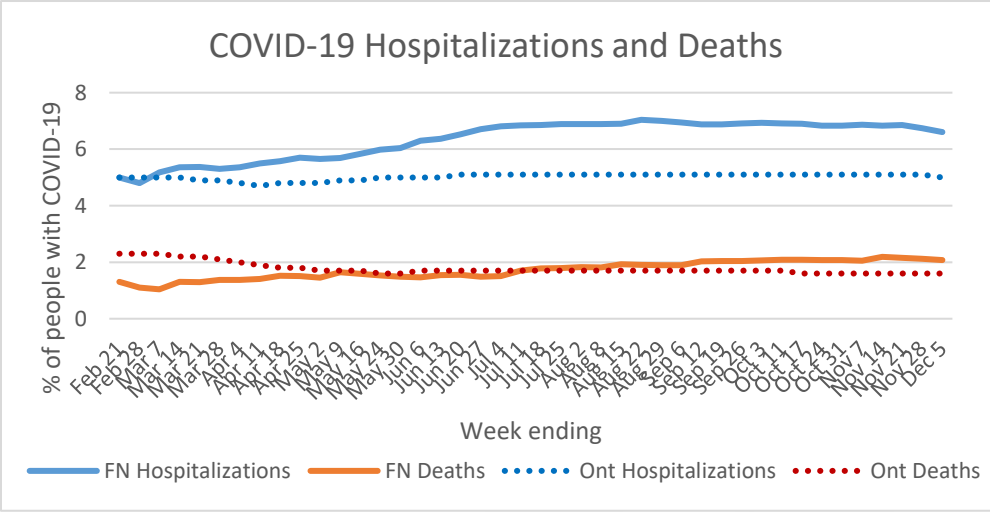
Coverage in the 2 southern areas is about 5% less than the other areas. The blue line shows rate for current period, with previous weeks' data in grey bars. Areas are based on Local Health Integration Networks (LHINs). See appendix for details.



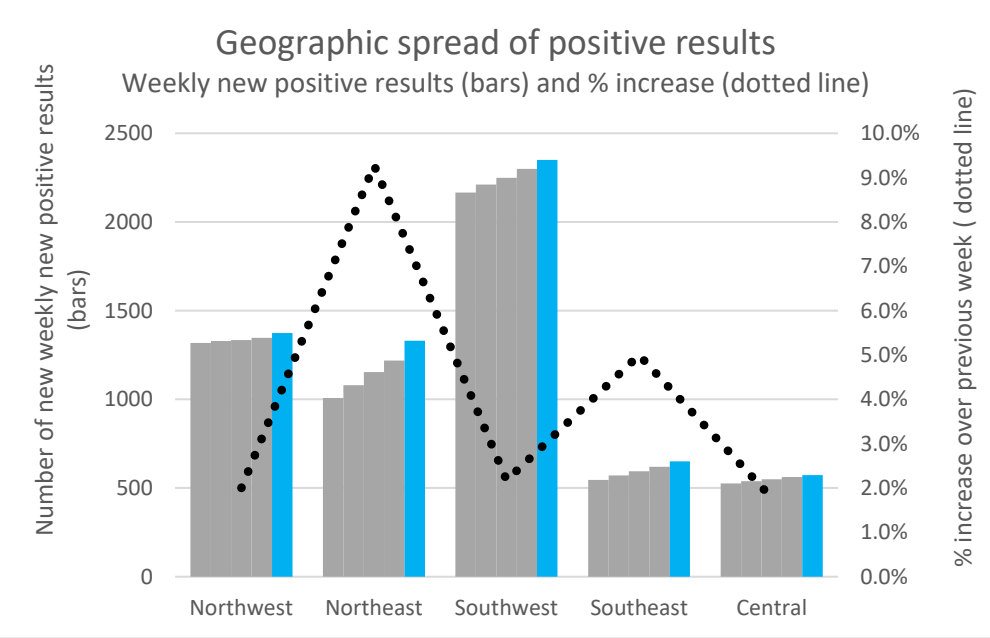
Vaccination rates are virtually the same for people living within and outside of First Nations communities. The blue line shows rate for current period, with previous weeks' data in grey bars.



For the **5th week**, new COVID-19 positive test results among First Nations **increased** this week, with total numbers up 13% from 5 weeks ago. Numbers increased across Ontario by 4% in the same time period.



Hospital admission rates among First Nations and across Ontario did NOT go up this week. Instead, there was a slight decrease (which could be normal variation). Death rates remained steady.



Northeast had almost half of all the new positives among First Nations this week. Northeast and Southeast continue to have the biggest increases this week (9 and 5% more respectively). Areas are based on Local Health Integration Networks (LHINs). See appendix for details.

Appendix:

Intervals in the reported data: Data are as of the week ending on the date shown with the exception of June 20, Jun 26 and Jul 4 for which data for First Nations are for the previous 5, 6 and 8 days, respectively, due to changes in reporting period. Subsequently, data for Ontario and First Nations are reported as rates for 7-day periods, pro-rated as necessary when report intervals are 6 or 8 days, due to the impact of holidays on the reporting process.

Weekly new positive results: Prior to Oct 2020, each week's total is the average of the current and previous week to mask values of less than 5, in compliance with data suppression rules. After that, actual numbers were used because the volume of new results per week was consistently (and unfortunately) more than 5. Data for Jul 18 and Aug 1, 2020 are based on averages of the previous and following weeks of both dates, to correct for known data quality issues.

Boundaries of "areas": Test results of individuals are reported for the LHIN associated with the postal code on the individual's Ontario health card. LHINs included in each "area" for this report are: Northwest: LHIN 14; Northeast: LHIN 13; Southwest: LHINs 1-4; Southeast: LHINs 9-11; Central: LHINs 5-8, 12. Follow this [link](#) to view maps showing LHIN boundaries.

Suppressed data: Data suppression is done at ICES. When data for one category in a series are suppressed, at least one of the results based on these categories must also be suppressed. Hence totals greater than 5 may be suppressed for one or more areas when at least one of the LHINs included in the calculation of area totals has less than 5 cases.